



# V<sup>x</sup> 610

Portable Powerhouse

## WIRELESS THAT WORKS!

**VERIFONE'S V<sup>x</sup> 610** wireless terminal delivers reliable, high-speed performance, advanced functionality and exceptional ease of use. Using the latest and most popular wireless technologies, the V<sup>x</sup> 610 allows transactions to be processed just about anywhere, at any time. It's the ideal processing solution for outdoor markets, taxis, delivery services, and restaurants who offer pay at the table, drive-thru, and delivery services.

New points of payment can be set up wherever you like! This is a great advantage for anyone who needs to offer payment in a temporary location or a business that's on the go. Wherever you put it to work, this terminal handles even the most complex mag-stripe or smart card transactions with ease. Plus, the V<sup>x</sup> 610's battery-powered, all-in-one design totally eliminates the need for cords, dongles and charging bases, giving you more mobility and hassle-free performance than ever before.

The V<sup>x</sup> 610's intuitive ATM-style interface and ergonomic design provides a familiar experience for users. And, of course, the V<sup>x</sup> 610 incorporates the latest protections against fraud and tampering that only VeriFone can provide. Plus, with the VeriFone name on the outside you know you are getting quality and reliability on the inside. With all this to offer, it's no wonder the V<sup>x</sup> 610 is fast becoming known as VeriFone's "portable powerhouse."



### FEATURES & BENEFITS

#### *Portability Means Flexibility*

- Accept credit and debit cards anywhere, anytime — instantly add an extra lane during sales, busy holiday seasons or peak store hours
- Offer additional points of sale for home delivery, or at drive-thru windows and kiosks
- Save on counter space and reduce clutter — no need for clumsy, expensive docking stations or power cords even if you're on the go
- "Always-on" connection and lightning-fast processing means customers spend less time waiting and move through checkout lanes faster

#### *Ease of Use and Familiar Design*

- Industry-leading SoftPay software provides a flexible and familiar environment
- ATM-style interface, large keys, large backlit display with bold menu prompts, and ergonomic design provide a friendly experience for users and employees alike
- High-speed thermal printer with "clam shell" design and drop-in paper loading virtually eliminates jams
- Value-added applications generate more revenue opportunities through gift and loyalty programs and prepaid services
- Convenient applications track time and attendance and verify employment

#### *Features That Complete the Package*

- Dual modem design — process transactions in-store using traditional dial or operate wirelessly for added flexibility
- Modular design allows you to take advantage of the latest technologies and upgrade when new ones become available or if you need to change technologies
- Integrated PIN pad allows clerks to easily hand over the device to customers for PIN entry

#### *Wireless You Can Count On!*

- Long-life battery size makes all-day use possible
- Industry leading antenna performance provides connectivity in hard to reach areas
- Large countertop paper roll eliminates the need for multiple changes during the day
- Integrated dial modem can keep you connected when there isn't a wireless signal

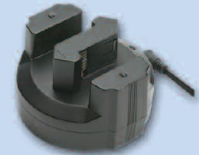
### Optional Accessories

#### *Battery*



*Industry-leading battery performance with large capacity goes all day*

#### *Battery Charger*



*Charge an extra battery for high volume environments or while on the road*

#### *Carrying Case*



*Nylon cover with shoulder strap for added protection and carrying convenience*

#### *Privacy Shield*



*Privacy Shield to guard against unwanted PIN entry viewing*



[www.verifone.com](http://www.verifone.com)

© 2005 VeriFone, Inc. All rights reserved. VeriFone, the VeriFone logo, SoftPay, and V<sup>x</sup> are either trademarks or registered trademarks of VeriFone in the United States and/or other countries. All features and specifications are subject to change without notice.  
08/05 45417 Rev B 20M/VM